



Our Services Guide

Soundproofing
Built For Real Life.

Primary Noise Concerns

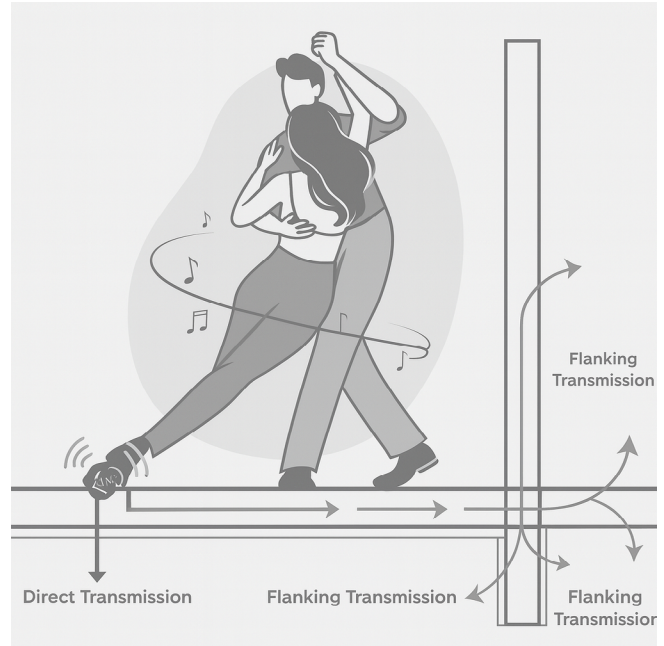
What Noise Issues Are We Solving?

Primary noise concerns:

- Voices
- TV/music
- Footfall/impact
- Bass/subwoofer
- Appliances/HVAC
- Plumbing Noises
- Snoring
- Dog's barking

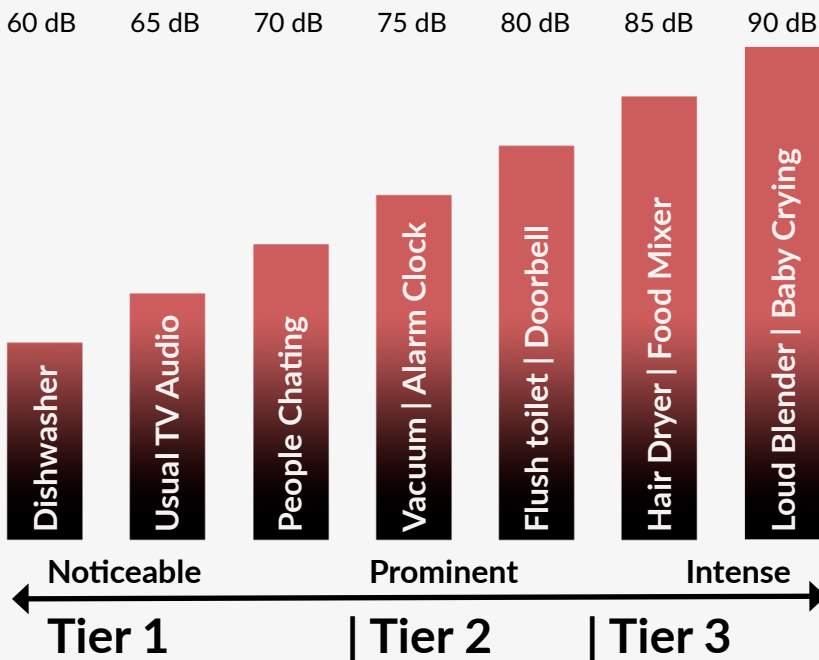
Direction of noise:

- From main floor → basement
- Basement → main floor
- Adjacent rooms
- Exterior → Interior



Do you have ceiling height concerns?
Are you open to drop ceiling options?

Loudness Scale Chart in Decibels (dB)



Room/Space Function?

Any priority rooms:

- Bedroom
- Home office
- Home theatre
- Playroom
- Rental suite (legal basement)

Your Desired Outcome?

- Speech privacy
- Lower disturbance
- Theatre-quality sound without bleed
- Quiet workspace

Tiered Ceiling Assemblies

Good - Tier 1

Quiet The Chatter

Performance Targets*

STC ≈ 56

(speech/regular noise)

Best For

- Legal basement retrofits/new, home office, rec room, man cave.



Assembly Summary

- Dense-Fill cellulose
- Resilient channels
- 1 sheets of 5/8" drywall

Better - Tier 2

Muffle The Mayhem

Performance Targets*

STC ≈ 65

(medium-loud; TV/music)

Best For

- Legal basement, rec room, louder TV/music, light instruments.



Assembly Summary

- Dense-Fill cellulose
- Decoupling clips (≈4" drop)
- Furring channels
- 2 sheets of 5/8" drywall
- Acoustic Compound
- Acoustical sealant
- Putty pads

Best - Tier 3

Tame The Thunder

Performance Targets*

STC 75+

(loud/very loud; bass/footsteps)

Best For

- Home theatre, music room/studio, loud families.



Assembly Summary

- Dense-Fill cellulose
- Isolator ceiling grid (≈6" drop)
- Furring channels
- 2 sheets of 5/8" drywall
- Acoustic Compound
- Acoustical sealant
- Putty pads
- Acoustic pipe wraps

STC: The Sound Transmission Class is a single-number rating of a material's or an assembly's ability to resist airborne sound transfer at the frequencies 125-4000 Hz. In general, a higher STC rating blocks more noise from transmitting through a partition.

* STC/IIC are lab-style targets; real-world results vary with structure and flanking paths. We design to your goals and site conditions.

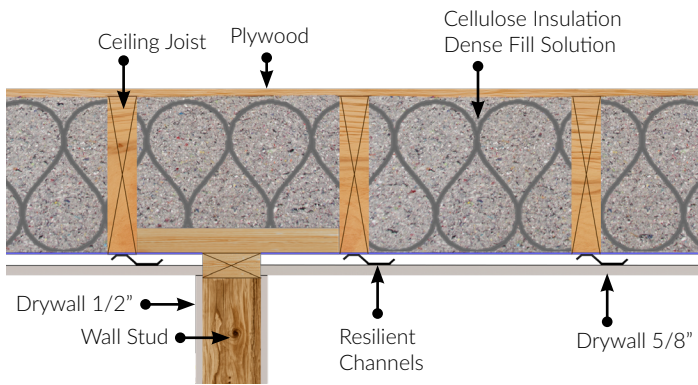
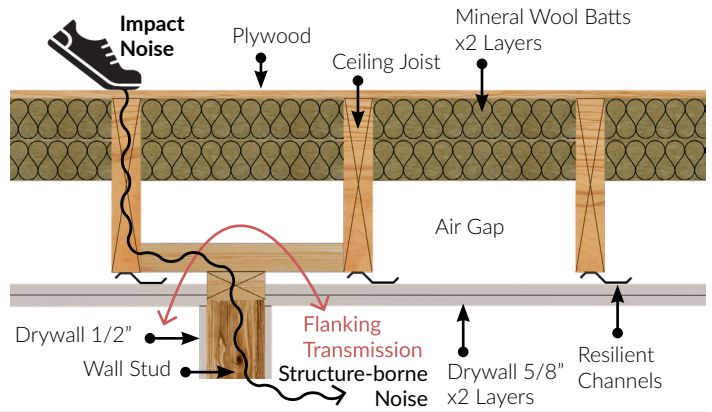
Assembly Overview

Common "Contractor Standard"

STC 45
FRR 2H.

Flanking transmission is not resolved

Two layers of mineral-wool batts with a 6+inch air gap, resilient channels, and two layers of 5/8" drywall. The joists still connect both floors, so sound slips through the structure and the air gap, and many other contact points.

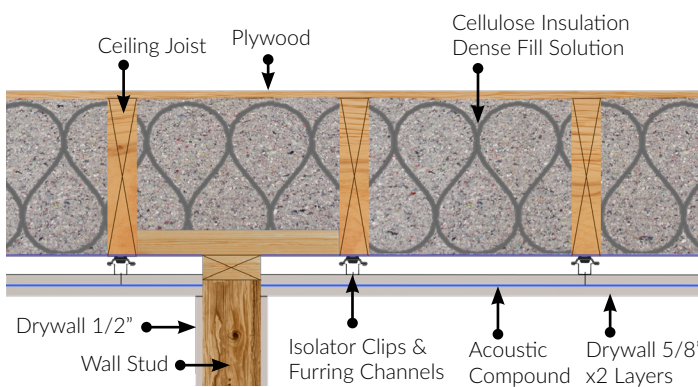


Tier 1 Solution

STC 56 | FRR 2.5 hours

Point of contact 150 per 100 Sq. Ft.

Dry Pac/Dense-fill cavity, add RC and one layer of 5/8" drywall. Air sealing from complete cavity fill reduces leaks and flanking. Solid step up for everyday speech/TV, but joists remain continuous so some impact and bass still travel.

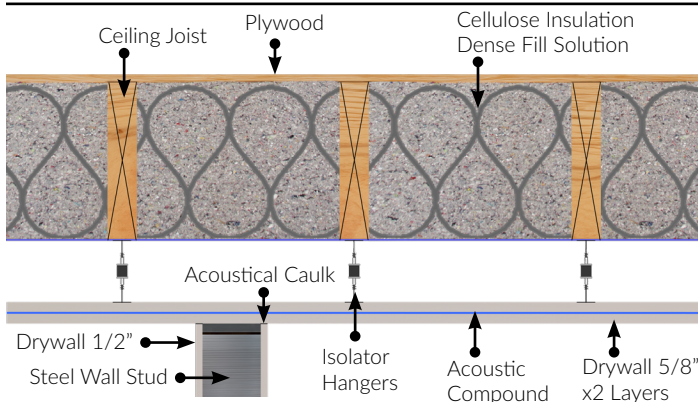


Tier 2 Solution

STC 65 | FRR 3 hours

Point of contact 20 per 100 Sq. Ft.

Dense-filled cavity with isolation clips + furring channels to reduce contact points. Two layers of 5/8" drywall with acoustic compound in between to dampen noises. Better for loud TV/music; improves footfall when flanking is absorbed



Tier 3 Solution

STC 75+ | FRR 3 hours

Point of contact 6 per 100 Sq. Ft.

Dense-filled cavity with an isolator ceiling grid (~6" drop) and double 5/8" to damping. Minimal contact points and a larger air gap cut direct transmission. Best for bass and footsteps; flanking is sealed, with optional duct mufflers.

FRR = Fire Rated Resistance

Quiet The Chatter

Tier 1 Solution



Detailed Breakdown Of Our Service

We dense-fill the ceiling with Dry Pac cellulose to add dense mass to the cavity and seal air leaks. Then we add resilient channel and one layer of 5/8" drywall to create a basic decoupled lid. Putty pads are added to electrical boxes and perimeter sealant help stop sound from sneaking through openings.

The Benefits

Cuts everyday speech and TV to a comfortable background so rooms can coexist without constant bleed-through.

Maintains ceiling height and keeps finish scope simple—ideal for bedrooms, home offices, and rental suites where privacy matters but headroom is tight.

Expected Outcomes

Use when the goal is everyday privacy without a major ceiling drop.

- Speech privacy – conversations don't carry between floors.
- TV/music clarity – faintly heard; sound has less bleed between.
- Light footfall – everyday steps feel softer between floors.

STC 56 | FRR 2.5 hours

Muffle The Mayhem

Tier 2 Solution

Detailed Breakdown Of Our Service

We dense-fill the joists, then install isolation clips with furring channels (about a 4" drop) to break the rigid link to framing. Two layers of 5/8" drywall with sound dampening compound, combined this adds mass and helps control vibrations. Openings, boxes, and penetrations are sealed to limit flanking paths.

The Benefits

Delivers stronger isolation for louder TV/music and busy households by breaking rigid paths and sealing flanking points.

Controls conversation carry and evening entertainment noise with a modest ~4" drop, making shared living spaces noticeably quieter.

Expected Outcomes

Use when louder activity or open plans need stronger isolation.

- Speech privacy – yelling voices are faint to inaudible.
- Entertainment noise – blarring TV/ music stays faint to inaudible.
- Common impacts noise are heard faintly, if at all.

STC 65 | FRR 3 hours



Tame The Thunder

Tier 3 Solution

Detailed Breakdown Of Our Service

For maximum control we build an isolator ceiling grid (about a 6" drop) over a dense-filled cavity, minimizing contact points. We finish with double 5/8" drywall and sound dampening compound, then seal every penetration; optional duct mufflers and door upgrades address tough flanking paths.



The Benefits

Engineered for the hard stuff—**bass vibrations and impact noises like heavy stomping or jumping**—so theatres, studios, and loud families can run at full tilt without disturbing the rest of the home.

A fully decoupled grid with heavy, damped layers and targeted flanking control tames structure-borne vibration and HVAC cross-talk for maximum privacy.

Expected Outcomes

Use when volume is cranked and bass/impact noise call for top-tier isolation.

- Heavy impact noises — heel strikes and impact energy are tamed.
- Bass/subwoofer rumble — low frequencies are greatly reduced.
- Surround sound systems — reduced to near-inaudible during movie nights.
- Intruments playing — rehearsal volume is contained and almost inaudible.

STC 75+ | FRR 3 hours

New-Build Options



Walls

Scope -

Dense Spray 100% of wall cavities for consistent sound privacy and thermal performance in new builds.

- Dry Pac or Dense Spray R22 cellulose in stud bays.
- Fire Class A/1 (ASTM E84).
- Air-sealing at plates, seams, and penetrations.
- Putty pads at electrical boxes to reduce flanking.
- Acoustical pipe wraps.

Mechanical & Electrical

Seal all penetrations and apply acoustic sealant at perimeters. Wrap ducts and pipes as required, and use optional duct mufflers to reduce HVAC cross-talk. Install putty pads at electrical boxes to limit flanking and maintain the designed isolation.



Floor-Ceilings

Scope -

Floor-to-floor sound attenuation planned into structure and finishes for better performance in new builds.

- Dry Pac cellulose in floor-ceiling joist bays (\approx R.-4) R.-3.7 per inch.
- Fire class A/1 (ASTM E84) & 2-hour rated at 10+ inches.
- Putty pads at electrical boxes to reduce flanking.
- Targeted flanking control at ducts, bulkheads, and stair connections.



Drywall

Scope -

Sheathing configurations to reach acoustic targets while keeping finishes clean.

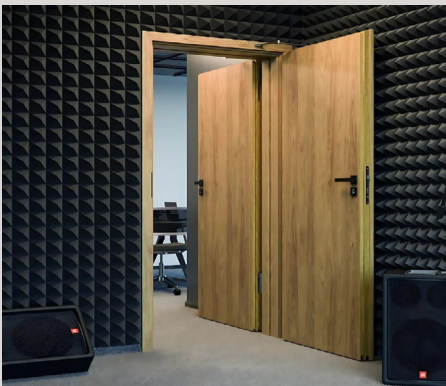
- 1/2" regular drywall basic option.
- 5/8" drywall baseline performance.
- Acoustical-grade drywall options available upon request.
- Double layers are installed with acoustical compound between.
- Acoustic sealant continuous at perimeters and seams.

Add-Ons & Enhancements

Performance Add-Ons

Customize your tier solution with performance add-ons. If you have a specific noise concern, we'll apply the right acoustic enhancements to any tier—ideal for rental suites, bedrooms, private work studios, or home theatres.

Speech privacy · Footstep/bass control · HVAC hush · Echo reduction



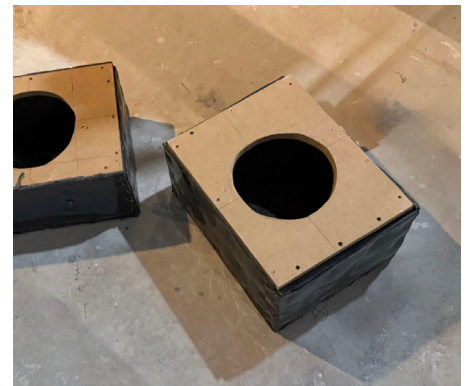
Door Systems

Sound and fire-rated door system that upgrades the weak link; boosts overall isolation. Including double-door entries for optimum soundproofing.



Duct Mufflers

Duct mufflers reduce HVAC cross-talk and whooshing air flow noise; ~-20 dB on duct-borne noise.



MDF Speaker Boxes

Custom MDF speaker backer boxes prove cleaner sound, less bleed into adjacent rooms and between floors.



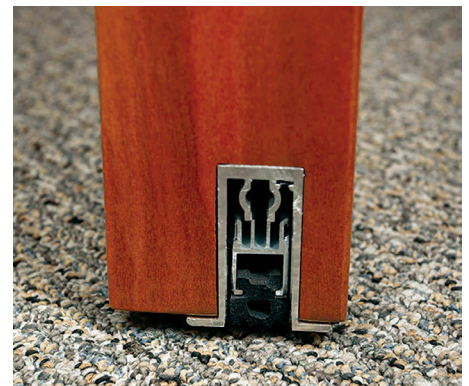
Absorption Panels

Acoustic absorption panels reduce echo/reverberation within the room, these are applied after the assembly is complete onto the finish surface.



Acoustic Pipe Wraps

Wraps noisy drain/vent lines to quiet water rush and "pipe talk" —ideal for PVC waste stacks and mechanical runs.



Door Seal Kit

Adds compressible perimeter seals and an automatic door bottom to stop air gaps, boosting overall room isolation without changing the door's look.